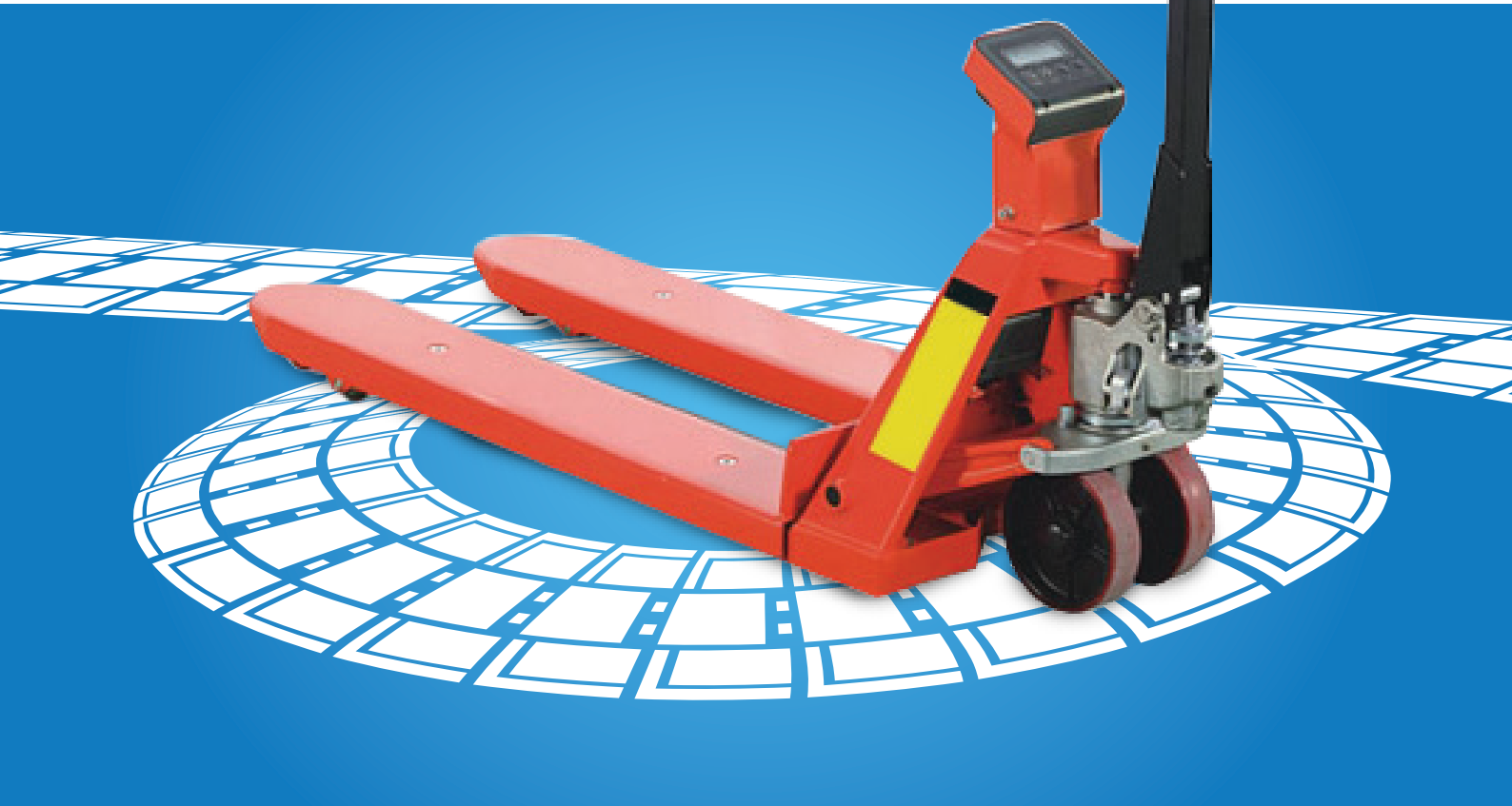


HAND PALLET TRUCK

with Weighing Scale



FEATURES



Manual zero correction



Error messages in display



Totalising function actuated by a switch



Auto sleep mode of display



High contrast display

ADVANTAGES

Maximum error 0.1% of scale capacity, even with floor conditions that are not optimal or when a load is placed out of center

Clear indication of overload

Ensures weight of all loads are taken in consideration and avoids duplication

Optimizes usage of battery

Clarity in information display at ambient light conditions without any additional backlight

BENEFITS

High accuracy

Preventing misuse

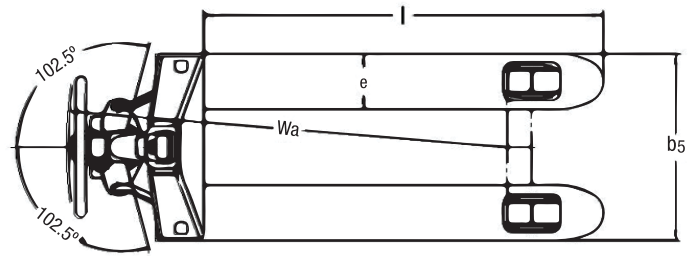
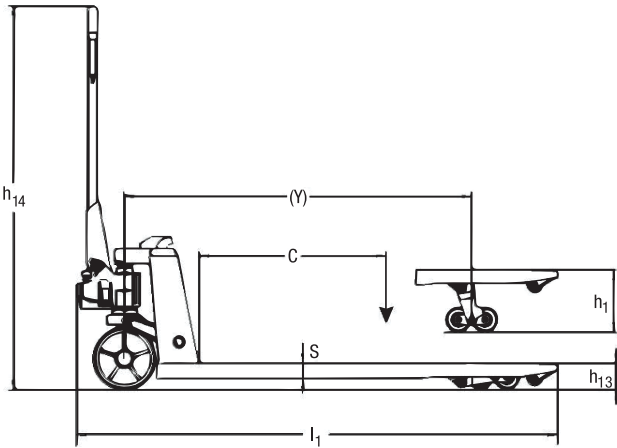
Accuracy in measuring weight of multiple loads

Longer workcycle

Higher productivity

TECHNICAL SPECIFICATION:

Specification		GPT 2000-WS-ECO	GPT 2000-WS	GPT 2000-W-WS
Capacity	kg	2000	2000	2000
Load Center (C)	mm	600	600	600
Accuracy	%	+/-2%	+/-0.1%	+/-0.1%
No. of Load Cells	Nos	1	4	4
Capacity Displayed	kg	In multiples of 5 kg	In multiples of 1 kg	In multiples of 1 kg
Fork Length (l)	mm	1150	1150	1220
Wheel Track (Y)	mm	1110	1110	1180
Min. Fork Height (h ₁₃)	mm	85	85	85
Max. Fork Height (h ₁)	mm	200	200	200
Size of Fork (e*S)	mm	160*50	180*50	180*50
Width Overall Forks (b5)	mm	550	555	692
Maximum Handle Height (h ₁₄)	mm	1220	1220	1220
Overall Length (l ₁)	mm	1552	1580	1650
Turning Radius (Wa)	mm	1370	1370	1400
Steering Wheel (PU)	mm	180*50	180*50	180*50
Load Roller (Tandem-PU)	mm	74*70	64*70	64*70
Battery	V/Ah	1.5V*2/2.7Ah	1.5V*4/2.7Ah	1.5V*4/2.7Ah
Optional Accessories		NA	Thermal Printer	Thermal Printer



THERMAL PRINTER

Reliable in mobile applications. The printer is designed to operate at low battery voltage levels. The printer is also resistant to vibrations and shocks.

NOTE: Weight Data is only for Internal Reference purpose, No trading activity should be carried out using this as Scale.

Govt. Stamping certificate is not in our scope. Whoever purchases the Scale pallet truck has to do stamping as per prevailing state rules.

In case of any queries, feel to contact:
Marketing Department

Godrej Material Handling
GODREJ & BOYCE MFG. CO. LTD.
Plant 16, Pirojshanagar,
Vikhroli, Mumbai - 400 079
Ph: +9122 6796 4669
Fax: +91 22 6796 1519
Email: mhemktg@godrej.com

To find out more about what's
new at Godrej Material Handling,
check out www.godrejmh.com



Branches & Service Centres

- Mumbai: 022 67961725
- Indore: 0731 4069335
- Kochi: 0484 6612777
- Delhi: 011 66507340
- Lucknow: 0522 6754961
- Pune: 020 66255121
- Chennai: 044 66544431
- Kolkata: 033 66013771
- Guwahati: 03612 468248
- Raipur: 0771 6606606
- Hyderabad: 040 66431203
- Chandigarh: 0172 5012525
- Bangalore: 080 66472251
- Ahmedabad: 079 66060646
- Jaipur: 0141 6701441
- Vizag: 0891 2517930
- Bhubaneswar: 0674 2583810 / 0674 2580609
- Coimbatore: 0422 2545799 / 599
- Indore: 0731 4069335 / 2532917
- UAE: +971 55 899 2305 / 2316